

APPENDIX M: ENGINEERING REPORTS

Volume 4 of 4

Contents:

Basis of Design Report -15% Design Appendices as follows:

12. F Rough Order of Magnitude Cost Estimate *

* Given the outdated costs reported in F Rough Order of Magnitude Cost Estimate, this section of Appendix M has been removed to avoid confusion and conflict with more accurate and up to date costs reported in the SEIS.

13. G Utility Disposition Report

14. H Shapefiles Supplied for WVA

It should be noted that the Engineering Reports were provided by CPRA as standalone documents and in some cases the terminology within may not match the terminology used in the SEIS (e.g. MSP vs. MSA-2 for the selected alternative).

STATE OF LOUISIANA
COASTAL PROTECTION AND RESTORATION AUTHORITY

RIVER REINTRODUCTION INTO MAUREPAS SWAMP
AND WEST SHORE LAKE PONTCHARTRAIN FLOOD RISK
REDUCTION PROJECT PO-0029
STATE PROJECT No. PO-0062
LaGOV NO. 4400019214

BASIS OF DESIGN REPORT
15% DESIGN

APPENDIX G

UTILITY DISPOSITION REPORT

**STATE OF LOUISIANA
COASTAL PROTECTION AND RESTORATION
AUTHORITY**

**RIVER REINTRODUCTION INTO MAUREPAS SWAMP
AND WEST SHORE LAKE PONTCHARTRAIN FLOOD RISK
REDUCTION PROJECT PO-0029
STATE PROJECT No. PO-0062
LaGOV NO. 4400019214**

**UTILITIES DISPOSITION REPORT
15% DESIGN**

For



**Prepared By:
AECOM Technical Services
7389 Florida Blvd.
Suite 300
Baton Rouge, LA 70806**

December , 2020

Rev	Date	Description
0	2020	Draft Submittal

River Reintroduction into Maurepas Swamp And West Shore Lake Pontchartrain Flood Risk Reduction Project Po-0029

UTILITIES DISPOSITION REPORT

1. Introduction

The proposed alignment for the Maurepas freshwater diversion channel stretches 5 ½ miles from the Mississippi River to deep within the Maurepas Swamp. Parallel and immediately adjacent to the Maurepas Diversion is the WSLP flood protection features, consisting of an earthen tie-in to the Mississippi River levee, a gated crossing at River Road, a combination of levees and structural floodwalls throughout the alignment, gated crossings at both the CN and KCS railroads, a raised crossing of Airline Highway, and a tie-in to the levee at WSLP Reach 110. Due to the length of the proposed construction, the project intersects numerous utility and industrial product pipeline rights-of-way. In order to construct the project, these utilities and other infrastructure components must be relocated to positions that will not adversely affect the construction process.

2. Coordination

During the Preliminary Design of the Maurepas Diversion/WSLP, the Project Team issued requests to each of the utility companies with services in the area of the proposed diversion and flood protection to provide the means by which they preferred their utilities to be relocated. The options included:

- To be relocated by Owner before construction
- To be relocated by Owner during construction
- To be relocated by Contractor before construction
- To be relocated by Contractor during construction

The utilities were identified from field reconnaissance, historical surveys, maps, and records, as well as information provided direction from the utility companies. A list of the companies as well as their relocation disposition is included in Appendix X.

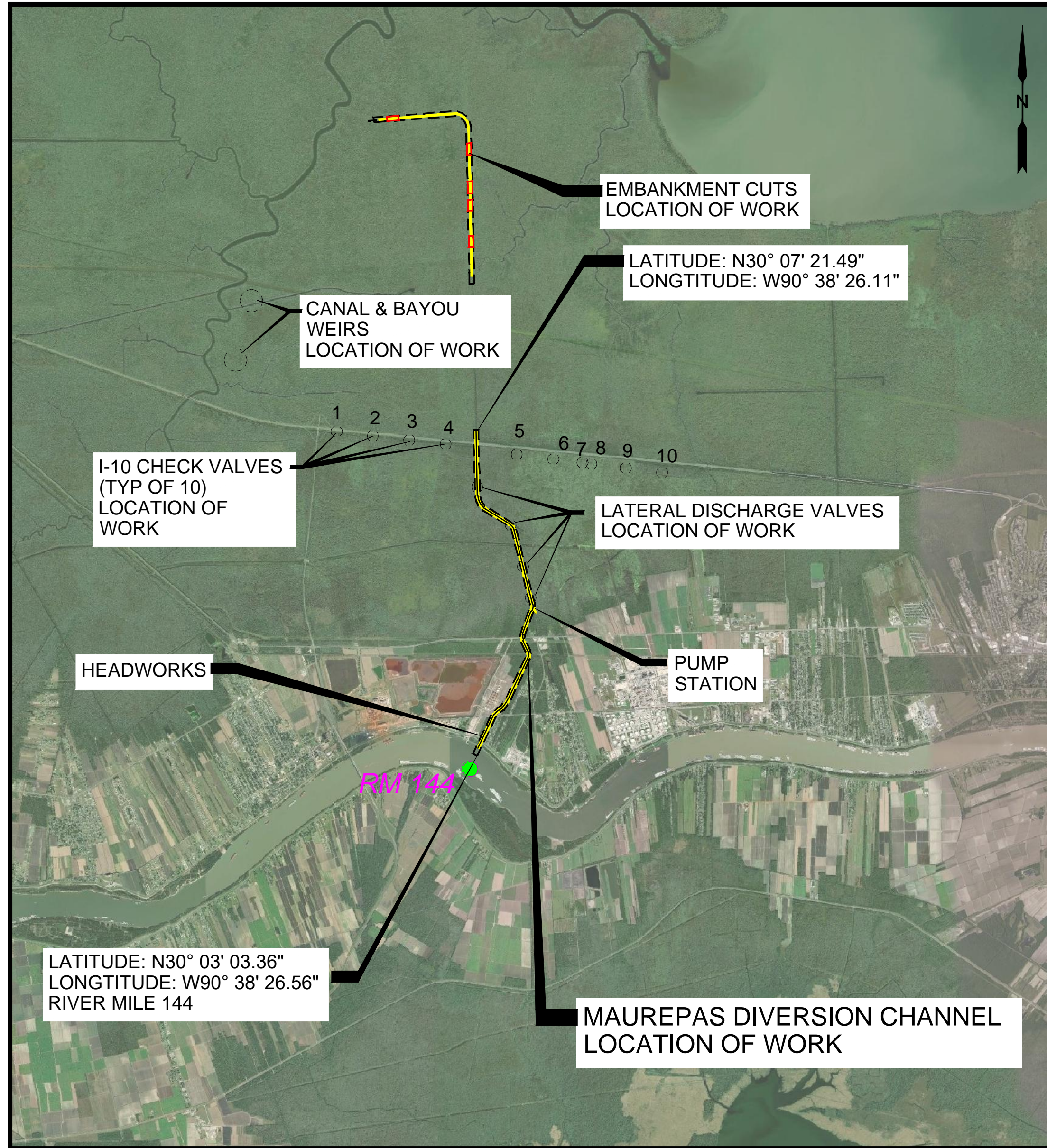
There are multiple key locations along the proposed channel and levee that have numerous utilities and/or product lines which intersect the proposed alignment. These locations include, but are not limited to, LA 44, Canadian National Railroad, Kansas City Southern Railroad, US 61 and I-10. In addition, there are also 2 major pipeline corridors, one just South of US 61 and the other between US 61 and I-10. Refer to the 15% Design drawings for the locations of the utilities (Sheets UD-1.00 through UD-1.08).

The Project Team attempted to contact all companies with identified utilities or product lines in the proposed alignment right-of-way via telephone on several occasions. At the time of this writing, a point of contact (POC) has not been established for all utility companies. The POC for these companies is designated as TBD and their utilities disposition is assumed at this time. For the companies with an established POC, an email describing the project with drawings depicting the utility in conflict was sent requesting them to review the plans, confirm ownership of their utilities, provide information on about the utilities, and confirm disposition of the relocation efforts.

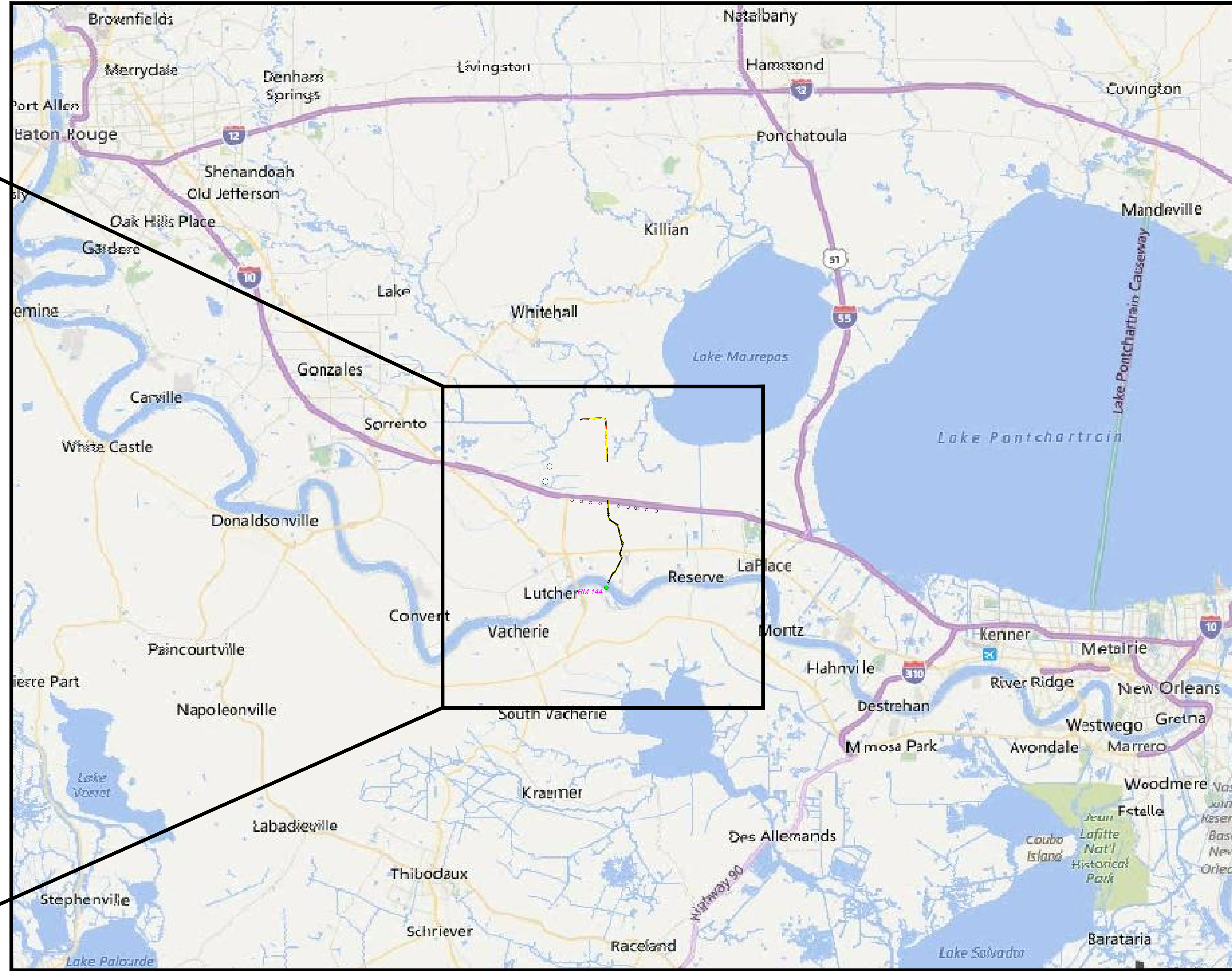
UTILITY OWNER	UTILITY ID	UTILITY DESCRIPTION	DISPOSITION	POINT OF CONTACT	PHONE	EMAIL
AT&T	F9	Underground Fiber Optic	To be relocated by Owner during Construction	Steve Degrave	770-331-3868	sd218b@att.com
Bengal Gas	G5	Gas Pipeline	To be relocated by Owner prior to Construction	Young Yim		young.yim@shell.com
EnLink Midstream, LLC (Ascension)	G10	Gas Pipeline	To be relocated by Owner prior to Construction	James Reynolds	337-354-1718	James.Reynolds@enlink.com
Entergy Transmission	P1-P32	Power Pole	To be relocated by Owner prior to Construction	Jimmy Sholar	504-615-5540	jsholar@entergy.com
	E3-E5	Overhead 115kV and 230kV				
Entergy Distribution	E1-E4, E6-E7	Overhead 13.7kV 3 Phase line	To be relocated by Owner prior to Construction	Winda Christophe	504-840-2594	wgibson@entergy.com
Enterprise Products	G7	Gas Pipeline Marker	To be relocated by Owner prior to Construction	Mark Dickey	225-675-2510	mwdickey@eprod.com
	G8	Gas Pipeline				
Enterprise (Acadian)	G1	4" Natural Gas Pipeline	To be relocated by Owner prior to Construction	Rory Hebert		
	G2	Gas Warning Sign				
Reserve Communication	C2	Overhead line on Entergy Poles	To be relocated by Owner prior to Construction	Barry Firmin	985-966-3476	bfirmin@reservetele.com
St. John the Baptist Parish	S1, S3-S4	Underground Sewer Line	To be relocated by Contractor during Construction	Reed Alexander	Office: 985-651-6800 Cell: 504-457-1219	r.alexander@stjohn-la.gov
	SMH1, S6	Sewer Manhole				
	S5	Sewer Clean Out				
	W1-W3, W5-W6	Underground Water Line				
	W4, W7-W8	Fire Hydrant				
W9-W10	Water Meter					
Air Products	G12	Gas Pipeline	To be relocated by Owner prior to Construction	Bubba	225-571-5692	leblanwc@airproducts.com

UTILITY OWNER	UTILITY ID	UTILITY DESCRIPTION	DISPOSITION	POINT OF CONTACT	PHONE	EMAIL
AT&T Distribution	F1	Underground Fiber Optic	To be relocated by Owner during Construction	TBD		
	T1-T2	Telephone Pole				
	T3-T4, T6	Overhead Telephone Line				
	F2	Underground Fiber Optic				
	T5	Telephone Pedestal				
Chevron/Texaco	G9, G11-G12	Gas Pipeline	To be relocated by Owner prior to Construction	TBD		
	G10	Gas Pipeline Marker				
Comcast	C1	Overhead line on Entergy Poles	To be relocated by Owner during Construction	TBD		
Gulf South	G3-G5	Gas Pipeline Marker	To be relocated by Owner prior to Construction	TBD		
	G6	Gas Pipeline				
Marathon	G6-G7	Gas Pipeline	To be relocated by Owner prior to Construction	TBD		
MCI	F4	Underground Fiber Optic	To be relocated by Owner during Construction	TBD		
	F5	Fiber Optic Hand Hole				
Wiltel	F5	Underground Fiber Optic	To be relocated by Owner during Construction	TBD		
	F6-F7	Fiber Optic Sign				
	F8	Fiber Optic Pole				

C:\working\aecom\da20_na_2019\greg.france@aecom.com\d0120085\AG-2.00_Vicinity and Location Maps.dwg, Sep 24, 2020 - 11:26:11AM, greg.france



PROJECT LOCATION MAP
SCALE: NTS



VICINITY MAP
SCALE: NTS

PRELIMINARY - NOT FOR RECORDATION, CONVEYANCES OR SALES
PRELIMINARY - NOT FOR CONSTRUCTION

PHILLIP OLIVIER
ENGINEER OF RECORD
LA STATE LICENSE NO. 36348
CIVIL DISCIPLINE
SEPTEMBER 2020
DATE

REV. DATE DESCRIPTION BY



1515 POYDRAS ST
SUITE 2700
NEW ORLEANS, LA 70112



LOUISIANA COASTAL PROTECTION AND RESTORATION AUTHORITY
COASTAL ENGINEERING DIVISION

150 TERRACE AVENUE
BATON ROUGE, LOUISIANA 70802

DRAWN BY:

DESIGNED BY:

RIVER REINTRODUCTION INTO MAUREPAS SWAMP AND WEST SHORE LAKE PONTCHARTRAIN FLOOD RISK REINTRODUCTION

CPRA PROJECT NUMBER: PO-0029

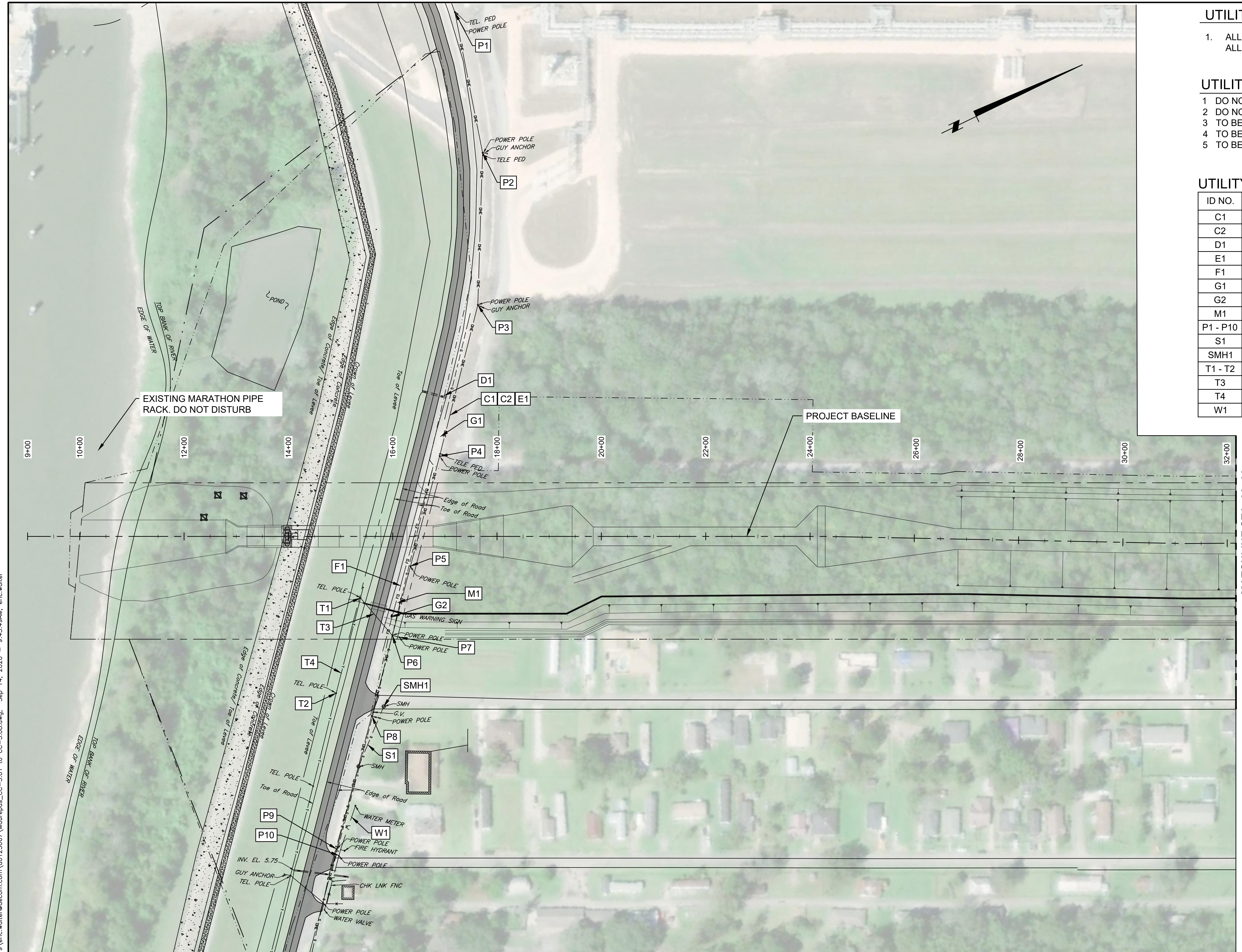
AECOM PROJECT NUMBER: 60632162

APPROVED BY:

VICINITY AND LOCATION MAPS

DATE: SEPTEMBER 2020

SHEET AG-2.00



UTILITY NOTES:

1. ALL UTILITIES SHOWN ARE APPROXIMATE. CONTRACTOR SHALL FIELD LOCATED ALL UTILITY FOR VERIFICATION.

UTILITY DISPOSITION LEGEND:

- 1 DO NOT DISTURB
- 2 DO NOT DISTURB-ACCESS ONLY
- 3 TO BE RELOCATED BY OWNER PRIOR TO CONSTRUCTION
- 4 TO BE RELOCATED BY OWNER CONCURRENT WITH CONSTRUCTION
- 5 TO BE RELOCATED BY CONTRACTOR DURING CONSTRUCTION

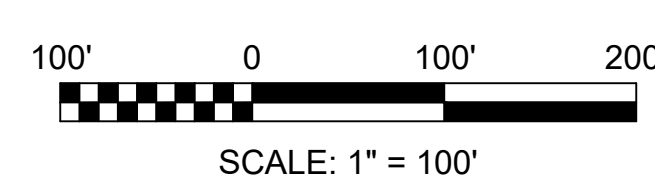
UTILITY DISPOSITION TABLE:

ID NO.	OWNER	DESCRIPTION	DISPOSITION
C1	COMCAST (TIME WARNER)	OVERHEAD LINE ON ENTERGY POLES	1
C2	RESERVE COMMUNICATION	OVERHEAD CABLE ON ENTERGY POLES	1
D1	LADOTD ?	DRAINAGE PIPE	1
E1	ENTERGY DISTRIBUTION	OVERHEAD 13.7kv 3 PHASE LINE	1
F1	AT&T	UNDERGROUND FIBER OPTIC	1
G1	ENTERPRISE (ACADIAN)	4" NATURAL GAS PIPELINE	1
G2	ENTERPRISE (ACADIAN)	GAS WARNING SIGN	1
M1	MARATHON	PLANT ENTRANCE SIGN	3 *
P1 - P10	ENTERGY	POWER POLE	1
S1	ST. JOHN THE BAPTIST PARISH	UNDERGROUND SEWER LINE	1
SMH1	ST. JOHN THE BAPTIST PARISH	SEWER MANHOLE	1
T1 - T2	AT&T ?	TELEPHONE POLE	1
T3	AT&T ?	OVERHEAD TELEPHONE LINE	1
T4	AT&T ?	OVERHEAD TELEPHONE LINE	1
W1	ST. JOHN THE BAPTIST PARISH	UNDERGROUND WATER LINE	1

* AECOM TO COORDINATE WITH MARATHON

MATCHLINE STA. 32+00

C:\pwworking\aecom\ds20_na_2019\eric.walter@aecom.com\d0123067\Maurepas_CC-3.01 to CC-3.08.dwg, Sep 14, 2020 - 9:43:49AM, eric.walter



PRELIMINARY - NOT FOR RECORDATION, CONVEYANCES OR SALES PRELIMINARY - NOT FOR CONSTRUCTION		REV.	DATE	DESCRIPTION	BY
PHILLIP OLIVIER ENGINEER OF RECORD LA STATE LICENSE NO. 36348	CIVIL DISCIPLINE SEPTEMBER 2020				



1515 POYDRAS ST
SUITE 2700
NEW ORLEANS, LA 70112



LOUISIANA COASTAL PROTECTION AND RESTORATION AUTHORITY
COASTAL ENGINEERING DIVISION
150 TERRACE AVENUE
BATON ROUGE, LOUISIANA 70802

DRAWN BY:

DESIGNED BY:

RIVER REINTRODUCTION INTO MAUREPAS SWAMP AND WEST SHORE LAKE PONTCHATRAIN FLOOD RISK REINTRODUCTION

CPRA PROJECT NUMBER: PO-0029

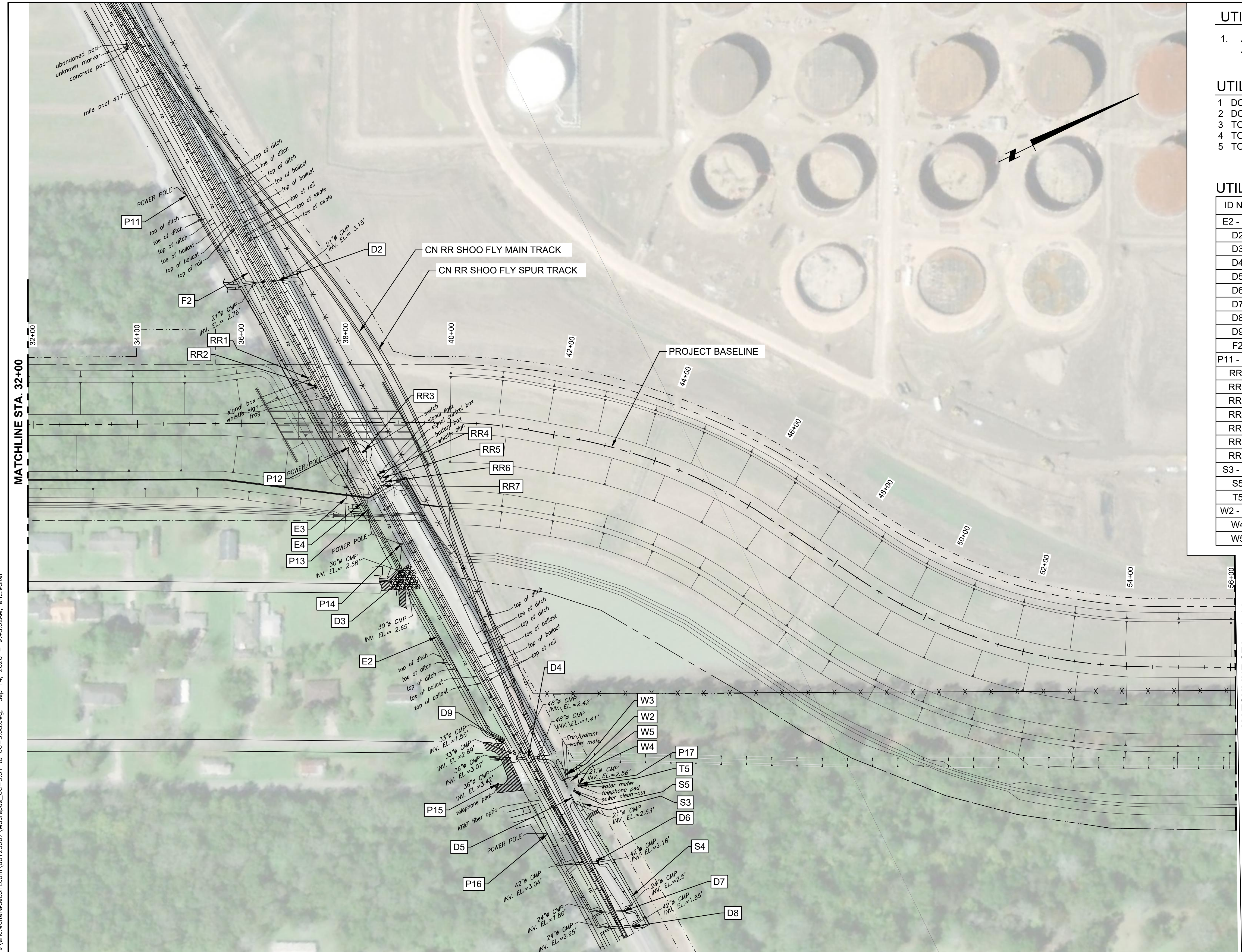
AECOM PROJECT NUMBER: 60632162

APPROVED BY:

UTILITY PLANS
STA 9+00 TO STA 32+00

DATE: SEPTEMBER 2020

SHEET CC-3.01



UTILITY NOTES:

1. ALL UTILITIES SHOWN ARE APPROXIMATE. CONTRACTOR SHALL FIELD LOCATED ALL UTILITY FOR VERIFICATION.

UTILITY DISPOSITION LEGEND:

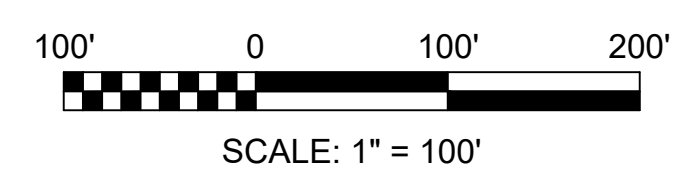
- 1 DO NOT DISTURB
- 2 DO NOT DISTURB-ACCESS ONLY
- 3 TO BE RELOCATED BY OWNER PRIOR TO CONSTRUCTION
- 4 TO BE RELOCATED BY OWNER CONCURRENT WITH CONSTRUCTION
- 5 TO BE RELOCATED BY CONTRACTOR DURING CONSTRUCTION

UTILITY DISPOSITION TABLE:

CN RR OR SJTBP? VERIFY

ID NO.	OWNER	DESCRIPTION	DISPOSITION
E2 - E4	ENTERGY DISTRIBUTION	OVERHEAD 13.7kv 3 PHASE LINE	1
D2	CN RR	21" CMP	1
D3	CN RR	30" CMP	1
D4	CN RR	48" CMP	1
D5	CN RR	21" CMP	1
D6	CN RR	42" CMP	1
D7	CN RR	24" CMP	1
D8	CN RR	42" CMP	1
D9	CN RR	33" CMP	1
F2	AT&T	FIBER OPTIC UNDERGROUND CABLE	1
P11 - P17	ENTERGY	POWER POLE	1
RR1	CN RR	SIGNAL BOX	1
RR2	CN RR	WHISTLE SIGN	1
RR3	CN RR	SWITCH	TBD
RR4	CN RR	SIGNAL LIGHT (417.2 MILE MARK)	TBD
RR5	CN RR	SIGNAL CONTROL BOX	TBD
RR6	CN RR	BATTERY BOX	TBD
RR7	CN RR	WHISTLE SIGN	TBD
S3 - S4	ST. JOHN THE BAPTIST PARISH	UNDERGROUND SEWER LINE	1
S5	ST. JOHN THE BAPTIST PARISH	SEWER CLEAN OUT	1
T5	AT&T	TELEPHONE PEDESTAL	1
W2 - W3	ST. JOHN THE BAPTIST PARISH	UNDERGROUND WATER METER	1
W4	ST. JOHN THE BAPTIST PARISH	FIRE HYDRANT	1
W5	ST. JOHN THE BAPTIST PARISH	UNDERGROUND WATER LINE	1

C:\pwworking\aecom\ds20_na_2019\eric.walter@aecom.com\d0123067\Maurepas_CC-3.01 to CC-3.08.dwg, Sep 14, 2020 - 9:48:02AM, eric.walter



PRELIMINARY - NOT FOR RECORDATION, CONVEYANCES OR SALES
PRELIMINARY - NOT FOR CONSTRUCTION

PHILLIP OLIVIER
ENGINEER OF RECORD
LA STATE LICENSE NO. 36348
CIVIL DISCIPLINE
SEPTEMBER 2020 DATE

REV.	DATE	DESCRIPTION	BY



1515 POYDRAS ST
SUITE 2700
NEW ORLEANS, LA 70112



LOUISIANA COASTAL PROTECTION AND RESTORATION AUTHORITY
COASTAL ENGINEERING DIVISION
150 TERRACE AVENUE
BATON ROUGE, LOUISIANA 70802

DRAWN BY:

DESIGNED BY:

RIVER REINTRODUCTION INTO MAUREPAS SWAMP AND WEST SHORE LAKE PONTCHATRAIN FLOOD RISK REINTRODUCTION

CPRA PROJECT NUMBER: PO-0029

AECOM PROJECT NUMBER: 60632162

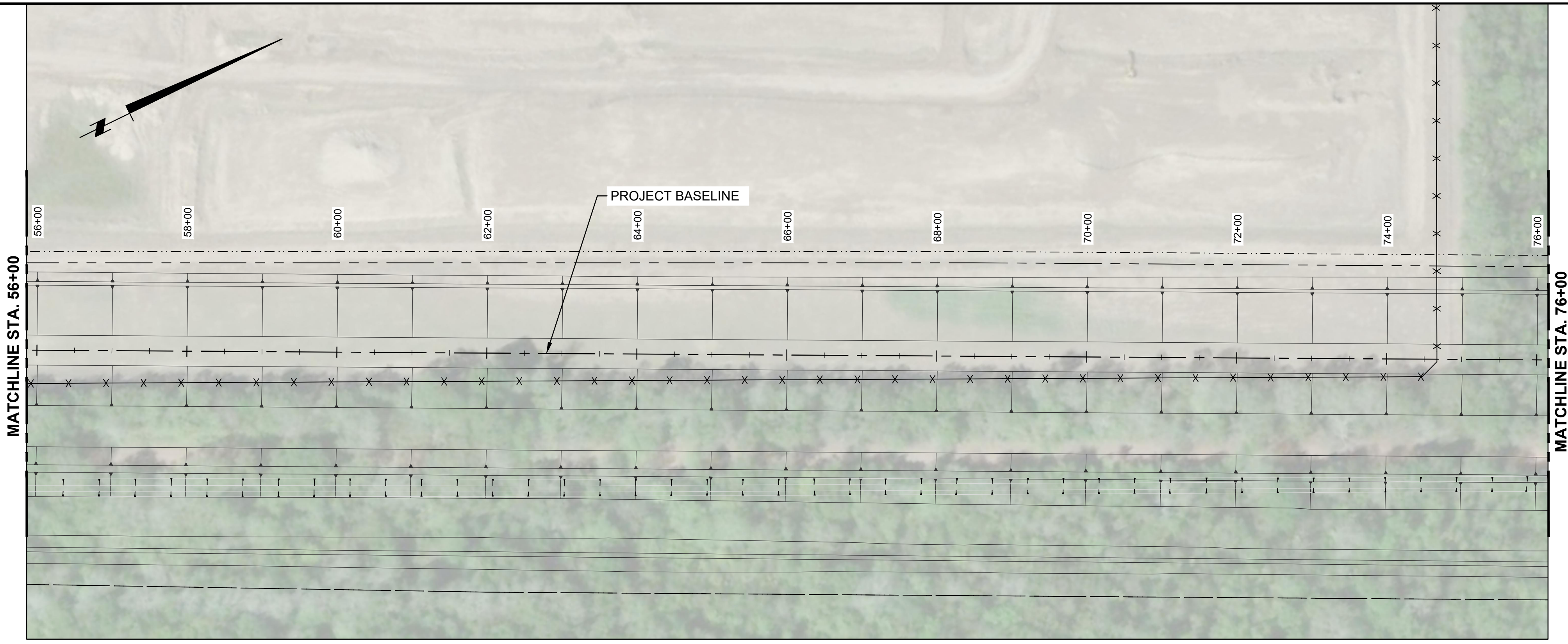
APPROVED BY:

UTILITY PLANS
STA 32+00 TO STA 56+00

DATE: SEPTEMBER 2020

SHEET CC-3.02

C:\pwworking\aecom\ds20_na_2019\eric.waller@aecom.com\d0123067\Maurepas_CC-3.01 to CC-3.08.dwg, Sep 14, 2020 - 10:02:55AM, eric.waller



UTILITY NOTES:

- ALL UTILITIES SHOWN ARE APPROXIMATE. CONTRACTOR SHALL FIELD LOCATED ALL UTILITY FOR VERIFICATION.

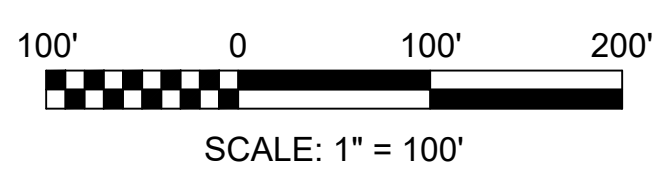
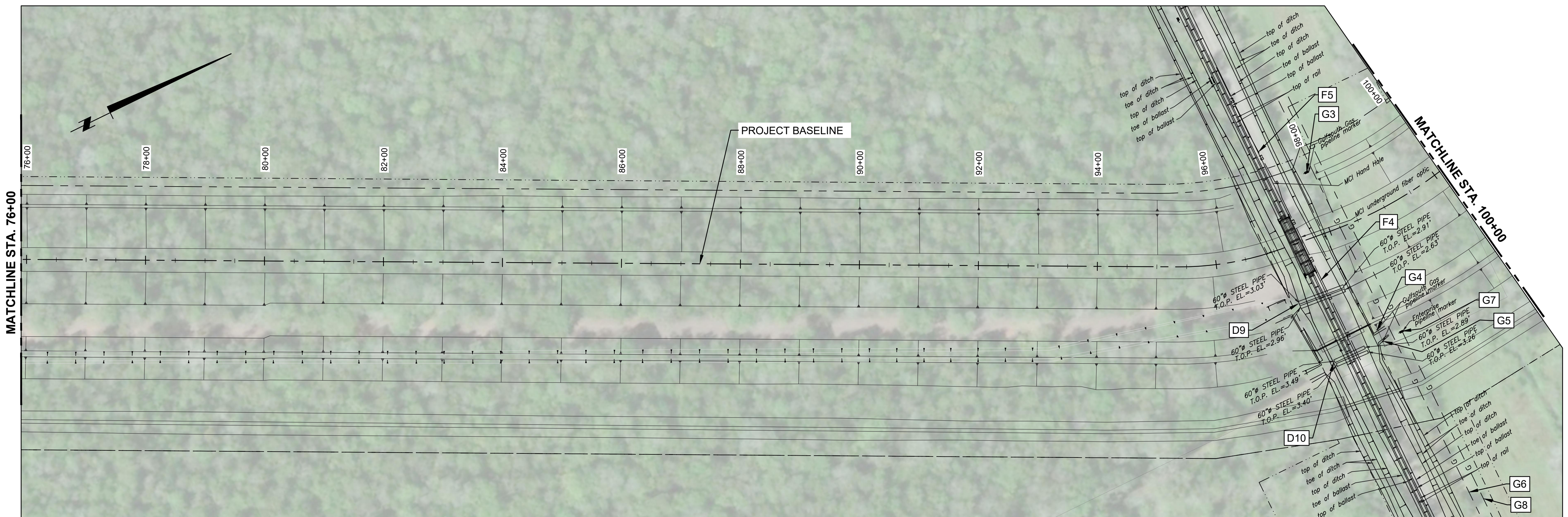
UTILITY DISPOSITION LEGEND:

- DO NOT DISTURB
- DO NOT DISTURB-ACCESS ONLY
- TO BE RELOCATED BY OWNER PRIOR TO CONSTRUCTION
- TO BE RELOCATED BY OWNER CONCURRENT WITH CONSTRUCTION
- TO BE RELOCATED BY CONTRACTOR DURING CONSTRUCTION

UTILITY DISPOSITION TABLE:

ID NO.	OWNER	DESCRIPTION	DISPOSITION
D9	ST. JOHN THE BAPTIST PARISH	UNDERGROUND (2) 60"Ø STL DRAIN LINE	5
D10	ST. JOHN THE BAPTIST PARISH	UNDERGROUND (2) 60"Ø STL DRAIN LINE	5
F4	MCI	FIBER OPTIC UNDERGROUND CABLE	1
F5	MCI	FIBER OPTIC HAND HOLE	1
G3 - G5	GULFSOUTH (ACADIAN)	GAS PIPELINE MARKER	3
* G6	GULFSOUTH (ACADIAN)	GAS PIPELINE	1
G7	ENTEPPRISE	GAS PIPELINE MARKER	3
* G8	ENTEPPRISE	GAS PIPELINE	1

* VERIFY PIPELINE LOCATION



PRELIMINARY - NOT FOR RECORDATION, CONVEYANCES OR SALES
PRELIMINARY - NOT FOR CONSTRUCTION

PHILLIP OLIVIER ENGINEER OF RECORD LA STATE LICENSE NO. 36348	CIVIL DISCIPLINE SEPTEMBER 2020 DATE	REV.	DATE	DESCRIPTION	BY

AECOM

1515 POYDRAS ST
SUITE 2700
NEW ORLEANS, LA 70112



LOUISIANA COASTAL PROTECTION AND RESTORATION AUTHORITY
COASTAL ENGINEERING DIVISION
150 TERRACE AVENUE
BATON ROUGE, LOUISIANA 70802

RIVER REINTRODUCTION INTO MAUREPAS SWAMP AND WEST SHORE LAKE PONTCHATRAIN FLOOD RISK REINTRODUCTION

CPRA PROJECT NUMBER: PO-0029

AECOM PROJECT NUMBER: 60632162

APPROVED BY:

UTILITY PLANS
STA 56+00 TO STA 100+00

DATE: SEPTEMBER 2020

SHEET CC-3.03

DRAWN BY:

DESIGNED BY:

UTILITY DISPOSITION LEGEND:

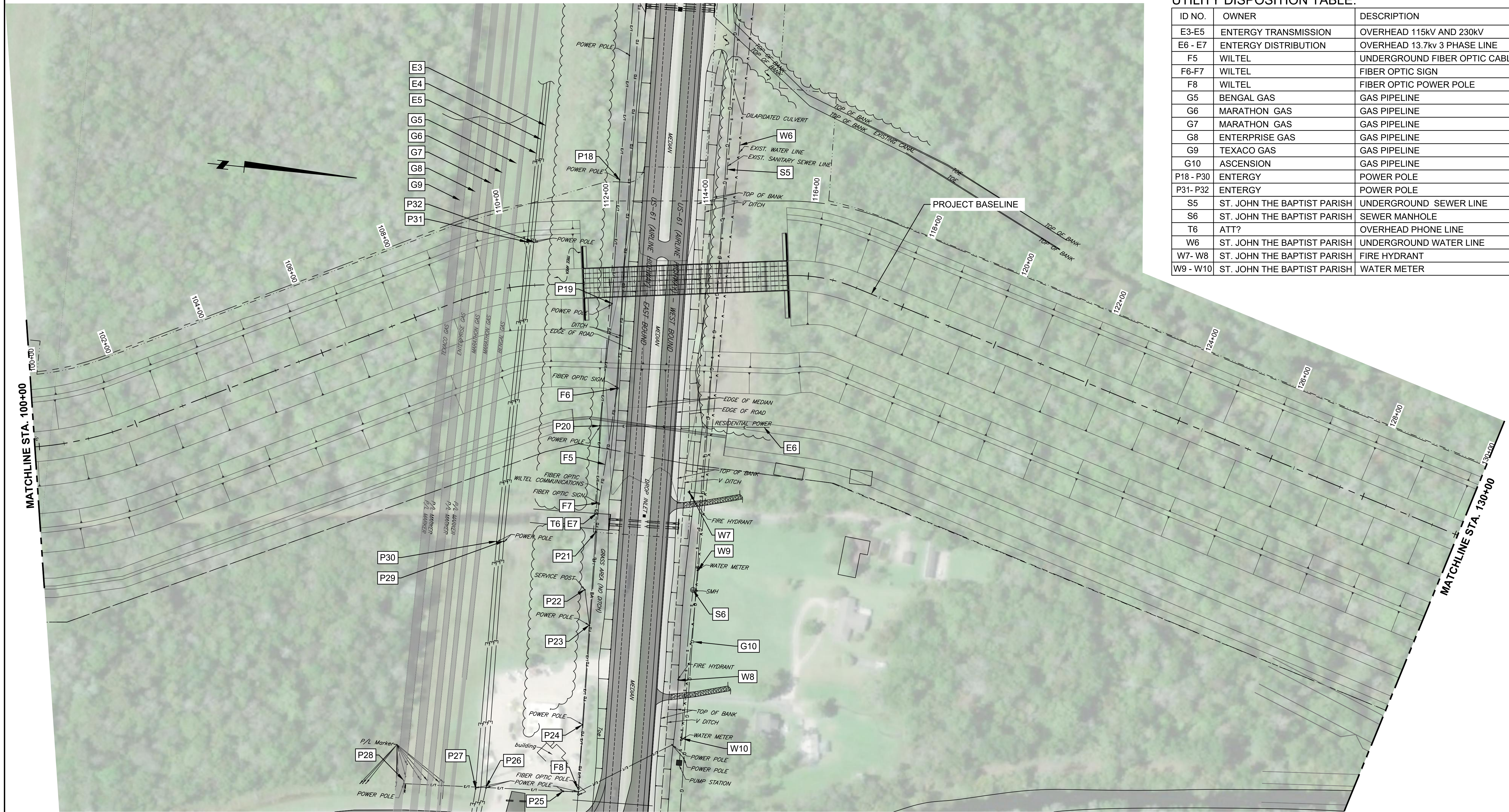
- 1 DO NOT DISTURB
- 2 DO NOT DISTURB-ACCESS ONLY
- 3 TO BE RELOCATED BY OWNER PRIOR TO CONSTRUCTION
- 4 TO BE RELOCATED BY OWNER CONCURRENT WITH CONSTRUCTION
- 5 TO BE RELOCATED BY CONTRACTOR DURING CONSTRUCTION

UTILITY NOTES:

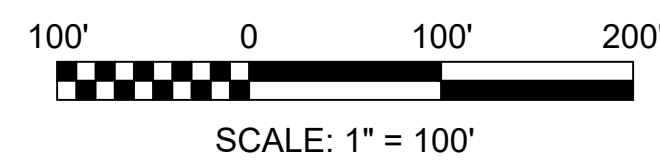
1. ALL UTILITIES SHOWN ARE APPROXIMATE. CONTRACTOR SHALL FIELD LOCATED ALL UTILITY FOR VERIFICATION.

UTILITY DISPOSITION TABLE:

ID NO.	OWNER	DESCRIPTION	DISPOSITION
E3-E5	ENERGY TRANSMISSION	OVERHEAD 115KV AND 230KV	1
E6 - E7	ENERGY DISTRIBUTION	OVERHEAD 13.7kv 3 PHASE LINE	1
F5	WILTEL	UNDERGROUND FIBER OPTIC CABLE	1
F6-F7	WILTEL	FIBER OPTIC SIGN	1
F8	WILTEL	FIBER OPTIC POWER POLE	1
G5	BENGAL GAS	GAS PIPELINE	1
G6	MARATHON GAS	GAS PIPELINE	1
G7	MARATHON GAS	GAS PIPELINE	1
G8	ENTERPRISE GAS	GAS PIPELINE	1
G9	TEXACO GAS	GAS PIPELINE	1
G10	ASCENSION	GAS PIPELINE	1
P18 - P30	ENERGY	POWER POLE	1
P31 - P32	ENERGY	POWER POLE	3
S5	ST. JOHN THE BAPTIST PARISH	UNDERGROUND SEWER LINE	1
S6	ST. JOHN THE BAPTIST PARISH	SEWER MANHOLE	1
T6	ATT?	OVERHEAD PHONE LINE	1
W6	ST. JOHN THE BAPTIST PARISH	UNDERGROUND WATER LINE	1
W7 - W8	ST. JOHN THE BAPTIST PARISH	FIRE HYDRANT	1
W9 - W10	ST. JOHN THE BAPTIST PARISH	WATER METER	1



C:\pwworking\aecom\ds20_na_2019\eric.waller@aecom.com\d0123067\Maurepas_CC-3.01 to CC-3.08.dwg, Sep 14, 2020 - 10:11:27AM, eric.waller



PRELIMINARY - NOT FOR RECORDATION, CONVEYANCES OR SALES
PRELIMINARY - NOT FOR CONSTRUCTION

PHILLIP OLIVIER
ENGINEER OF RECORD
LA STATE LICENSE NO. 36348
CIVIL DISCIPLINE
SEPTEMBER 2020
DATE

REV.	DATE	DESCRIPTION	BY



1515 POYDRAS ST
SUITE 2700
NEW ORLEANS, LA 70112



LOUISIANA COASTAL PROTECTION AND RESTORATION AUTHORITY
COASTAL ENGINEERING DIVISION

150 TERRACE AVENUE
BATON ROUGE, LOUISIANA 70802

DRAWN BY:

DESIGNED BY:

RIVER REINTRODUCTION INTO MAUREPAS SWAMP AND WEST SHORE LAKE PONTCHATRIN FLOOD RISK REINTRODUCTION

CPRA PROJECT NUMBER: PO-0029

AECOM PROJECT NUMBER: 60632162

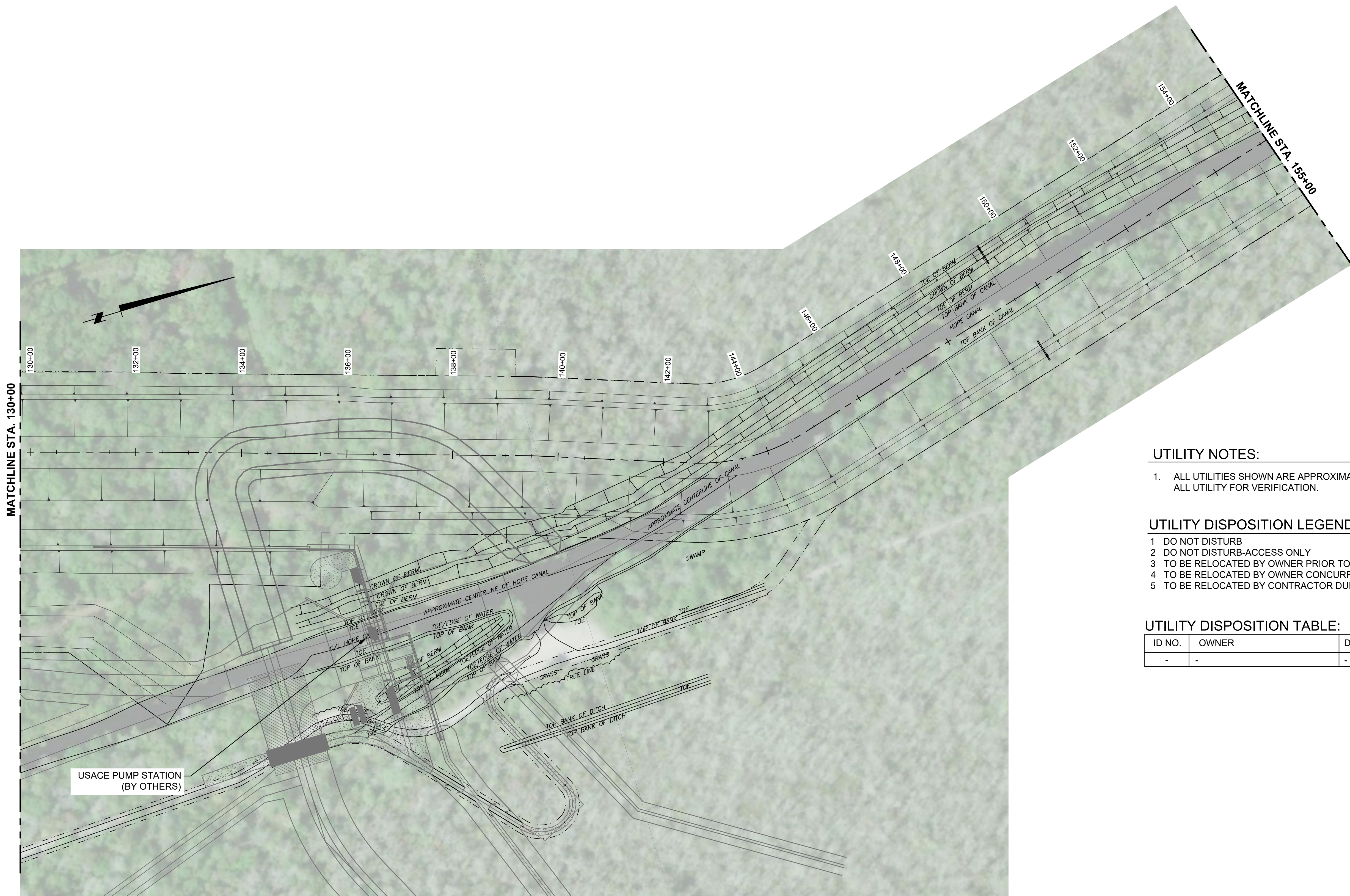
APPROVED BY:

UTILITY PLANS
STA 100+00 TO STA 130+00

DATE: SEPTEMBER 2020

SHEET CC-3.04

C:\pwworking\aecom\ds20_na_2019\eric.waller@aecom.com\d0123067\Maurepas_CC-3.01 to CC-3.08.dwg, Sep 14, 2020 - 10:32:40AM, eric.waller



UTILITY NOTES:

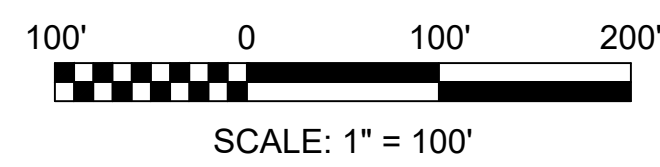
1. ALL UTILITIES SHOWN ARE APPROXIMATE. CONTRACTOR SHALL FIELD LOCATED ALL UTILITY FOR VERIFICATION.

UTILITY DISPOSITION LEGEND:

- 1 DO NOT DISTURB
- 2 DO NOT DISTURB-ACCESS ONLY
- 3 TO BE RELOCATED BY OWNER PRIOR TO CONSTRUCTION
- 4 TO BE RELOCATED BY OWNER CONCURRENT WITH CONSTRUCTION
- 5 TO BE RELOCATED BY CONTRACTOR DURING CONSTRUCTION

UTILITY DISPOSITION TABLE:

ID NO.	OWNER	DESCRIPTION	DISPOSITION
-	-	-	-



PRELIMINARY - NOT FOR RECORDATION, CONVEYANCES OR SALES
PRELIMINARY - NOT FOR CONSTRUCTION

PHILLIP OLIVIER
ENGINEER OF RECORD
LA STATE LICENSE NO. 36348
CIVIL DISCIPLINE
SEPTEMBER 2020
DATE

REV.	DATE	DESCRIPTION	BY



1515 POYDRAS ST
SUITE 2700
NEW ORLEANS, LA 70112



LOUISIANA COASTAL PROTECTION AND RESTORATION AUTHORITY
COASTAL ENGINEERING DIVISION
150 TERRACE AVENUE
BATON ROUGE, LOUISIANA 70802

DRAWN BY:

DESIGNED BY:

RIVER REINTRODUCTION INTO MAUREPAS SWAMP AND WEST SHORE LAKE PONTCHATRAIN FLOOD RISK REINTRODUCTION

CPRA PROJECT NUMBER: PO-0029

AECOM PROJECT NUMBER: 60632162

APPROVED BY:

UTILITY PLANS
STA 130+00 TO STA 155+00

DATE: SEPTEMBER 2020

SHEET CC-3.05

UTILITY NOTES:

1. ALL UTILITIES SHOWN ARE APPROXIMATE. CONTRACTOR SHALL FIELD LOCATED ALL UTILITY FOR VERIFICATION.

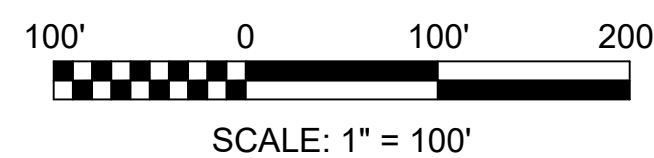
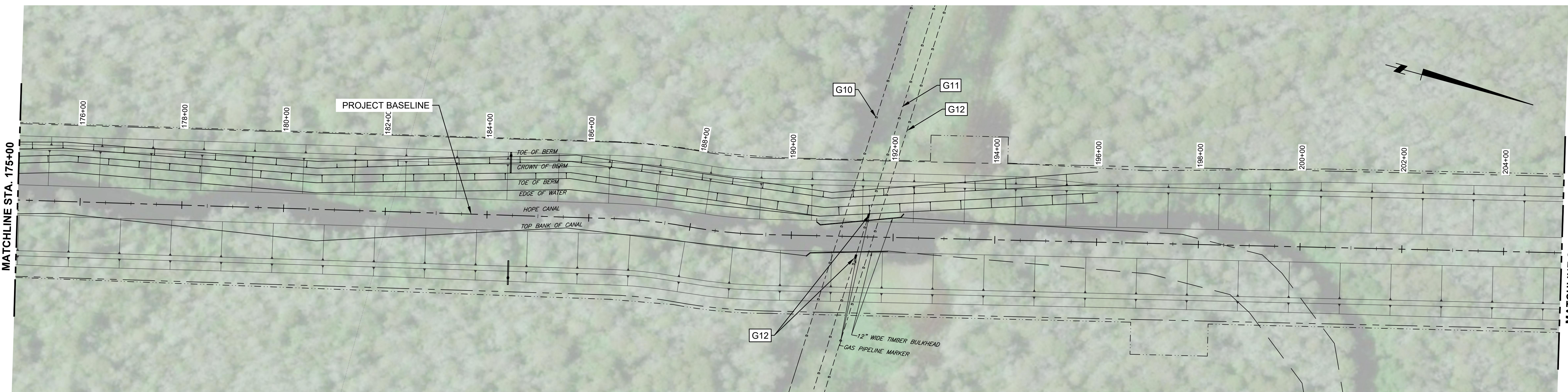
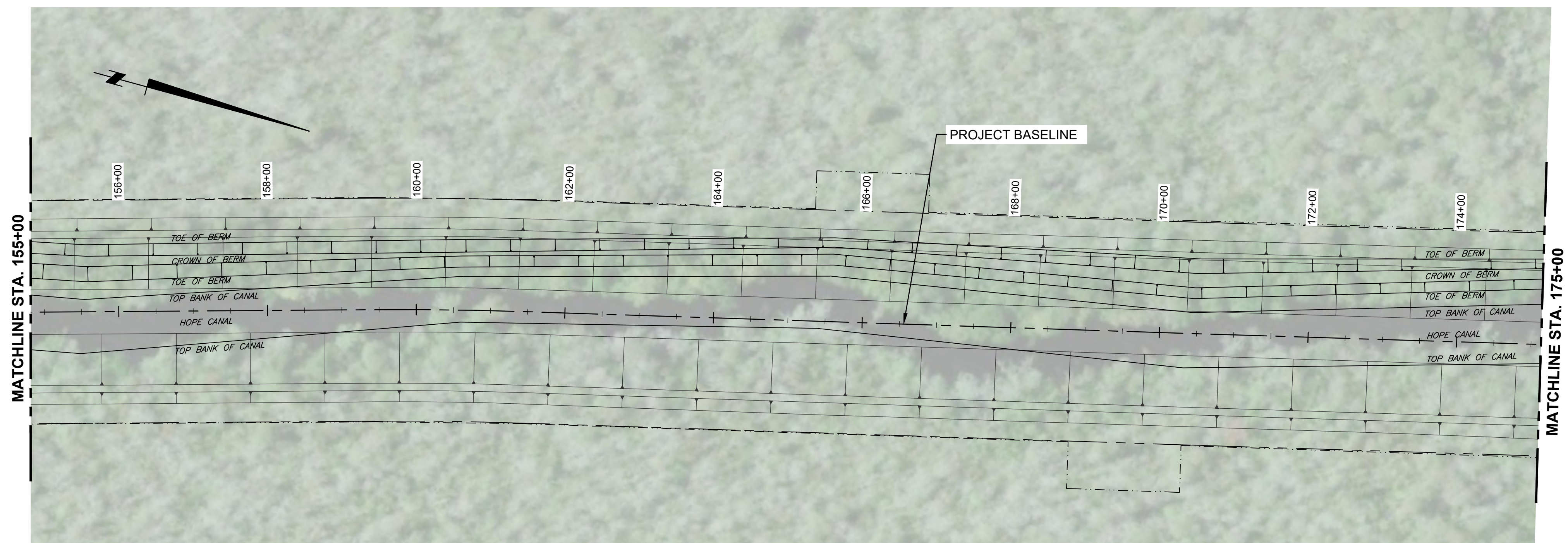
UTILITY DISPOSITION LEGEND:

- 1 DO NOT DISTURB
- 2 DO NOT DISTURB-ACCESS ONLY
- 3 TO BE RELOCATED BY OWNER PRIOR TO CONSTRUCTION
- 4 TO BE RELOCATED BY OWNER CONCURRENT WITH CONSTRUCTION
- 5 TO BE RELOCATED BY CONTRACTOR DURING CONSTRUCTION

UTILITY DISPOSITION TABLE:

ID NO.	OWNER	DESCRIPTION	DISPOSITION
* G10	CHEVRON/TEXACO	GAS PIPELINE MARKER	1
* G11	CHEVRON/TEXACO	GAS PIPELINE	1
* G12	CHEVRON/TEXACO	GAS PIPELINE	TDB
* G12	AIR PRODUCTS	GAS PIPELINE	1

* VERIFY MARKER LOCATION



PRELIMINARY - NOT FOR RECORDATION, CONVEYANCES OR SALES
PRELIMINARY - NOT FOR CONSTRUCTION

PHILLIP OLIVIER
ENGINEER OF RECORD
LA STATE LICENSE NO. 38348
CIVIL DISCIPLINE
SEPTEMBER 2020
DATE

REV.	DATE	DESCRIPTION	BY



1515 POYDRAS ST
SUITE 2700
NEW ORLEANS, LA 70112



LOUISIANA COASTAL PROTECTION AND RESTORATION AUTHORITY
COASTAL ENGINEERING DIVISION
150 TERRACE AVENUE
BATON ROUGE, LOUISIANA 70802

DRAWN BY:

DESIGNED BY:

RIVER REINTRODUCTION INTO MAUREPAS SWAMP AND WEST SHORE LAKE PONTCHATRAIN FLOOD RISK REINTRODUCTION

CPRA PROJECT NUMBER: PO-0029

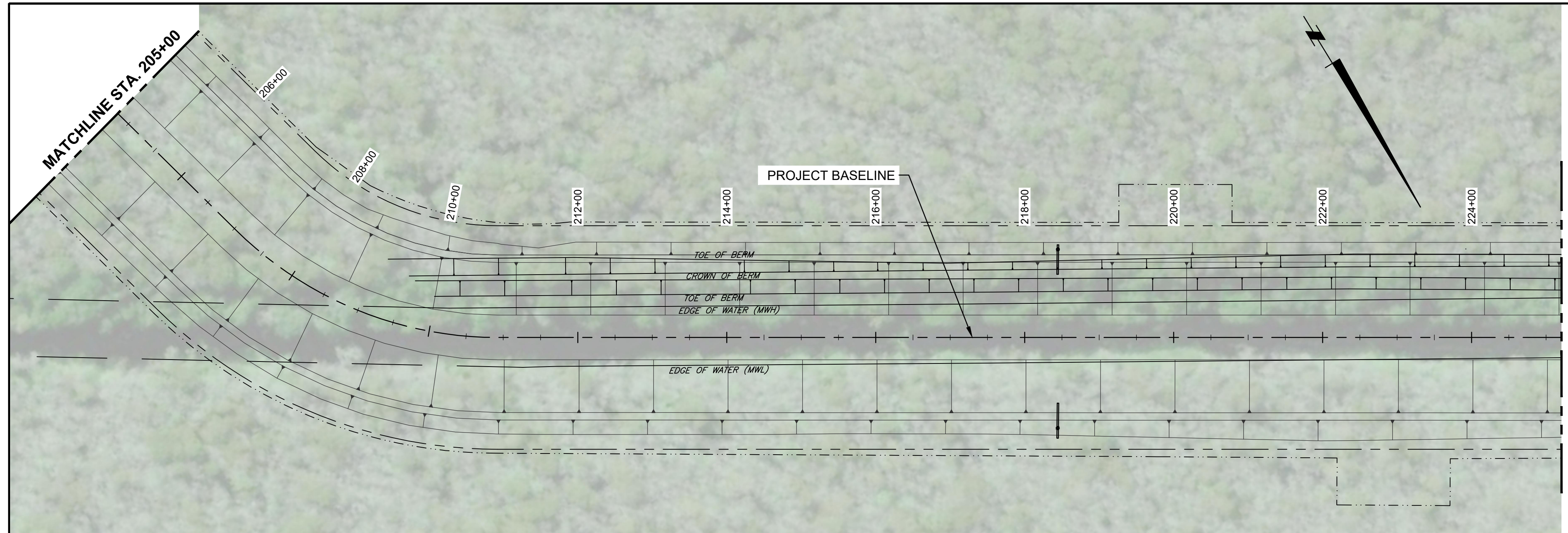
AECOM PROJECT NUMBER: 60632162

APPROVED BY:

UTILITY PLANS
STA 155+00 TO STA 205+00

DATE: SEPTEMBER 2020

SHEET CC-3.06



UTILITY NOTES:

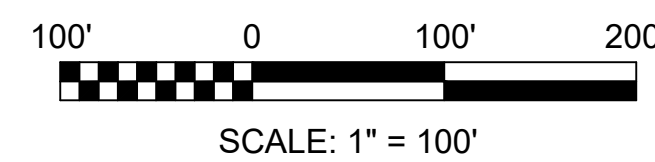
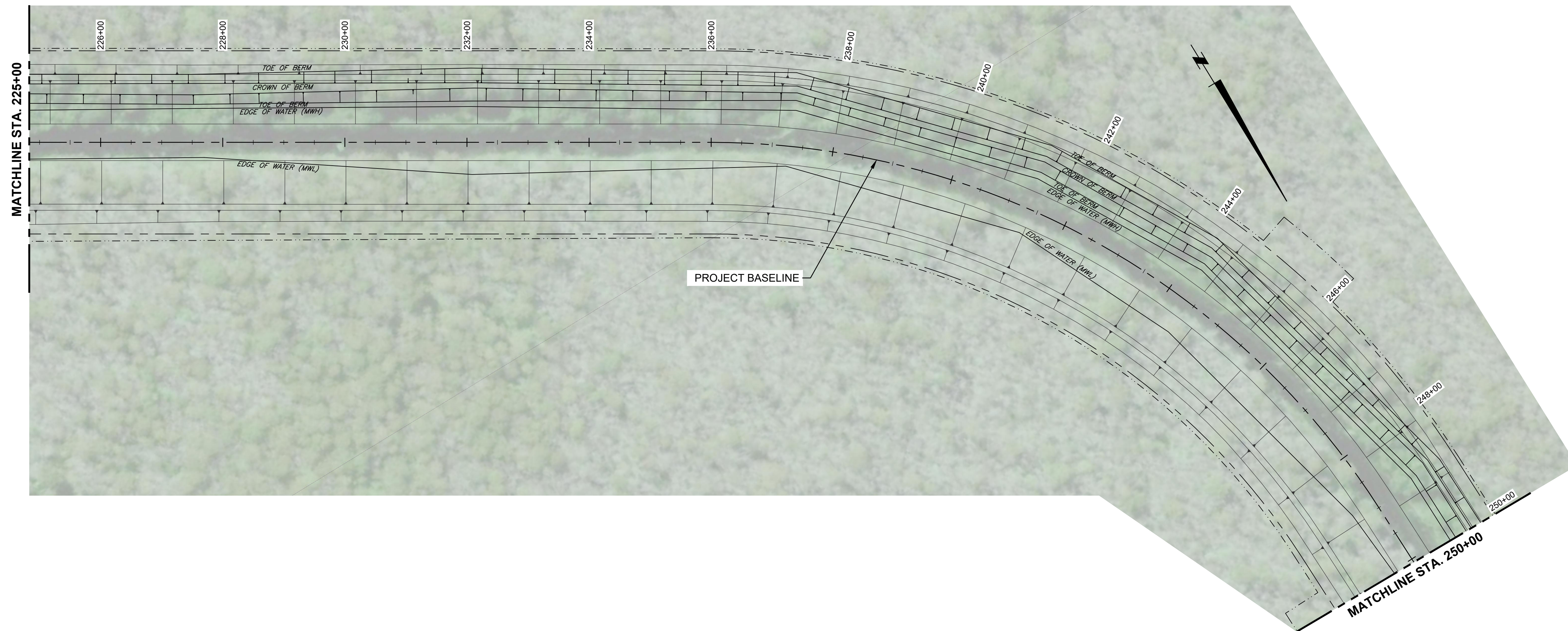
1. ALL UTILITIES SHOWN ARE APPROXIMATE. CONTRACTOR SHALL FIELD LOCATED ALL UTILITY FOR VERIFICATION.

UTILITY DISPOSITION LEGEND:

- 1 DO NOT DISTURB
- 2 DO NOT DISTURB-ACCESS ONLY
- 3 TO BE RELOCATED BY OWNER PRIOR TO CONSTRUCTION
- 4 TO BE RELOCATED BY OWNER CONCURRENT WITH CONSTRUCTION
- 5 TO BE RELOCATED BY CONTRACTOR DURING CONSTRUCTION

UTILITY DISPOSITION TABLE:

ID NO.	OWNER	DESCRIPTION	DISPOSITION
-	-	-	-



PRELIMINARY - NOT FOR RECORDATION, CONVEYANCES OR SALES PRELIMINARY - NOT FOR CONSTRUCTION		REV.	DATE	DESCRIPTION	BY
PHILLIP OLIVIER ENGINEER OF RECORD	CIVIL DISCIPLINE				
LA STATE	36348 LICENSE NO.	SEPTEMBER 2020 DATE			



1515 POYDRAS ST
SUITE 2700
NEW ORLEANS, LA 70112



LOUISIANA COASTAL PROTECTION AND RESTORATION AUTHORITY
COASTAL ENGINEERING DIVISION
150 TERRACE AVENUE
BATON ROUGE, LOUISIANA 70802

DRAWN BY:

DESIGNED BY:

RIVER REINTRODUCTION INTO MAUREPAS SWAMP AND WEST SHORE LAKE PONTCHATRAIN FLOOD RISK REINTRODUCTION

CPRA PROJECT NUMBER: PO-0029

AECOM PROJECT NUMBER: 60632162

APPROVED BY:

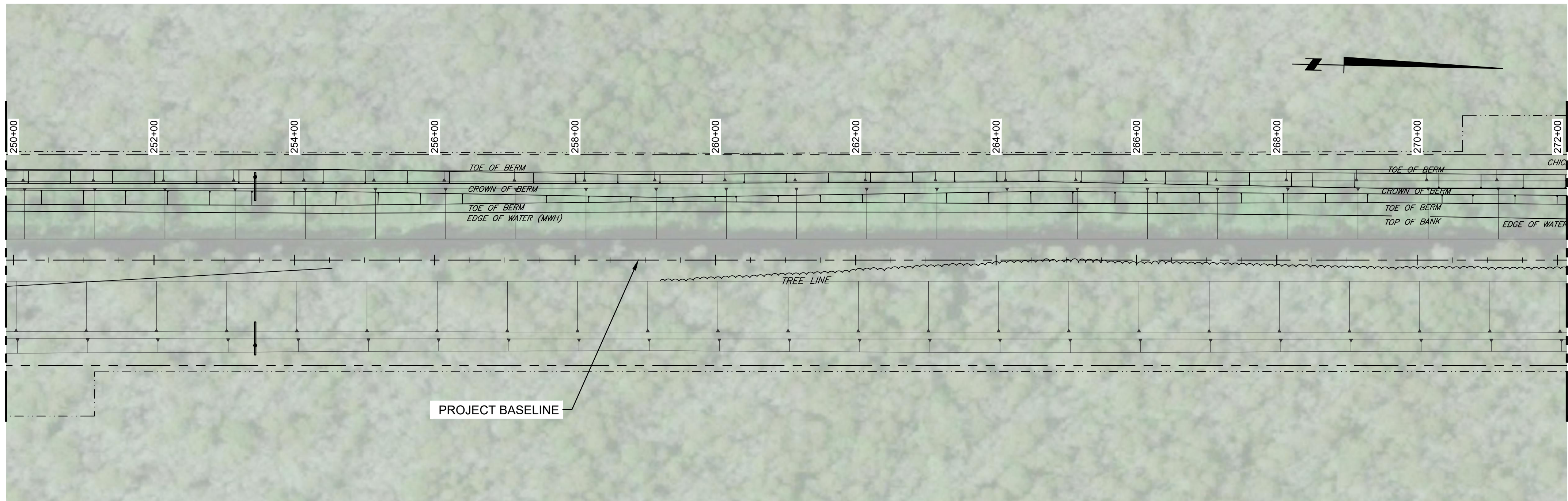
UTILITY PLANS
STA 205+00 TO STA 250+00

DATE: SEPTEMBER 2020

SHEET CC-3.07

C:\pwworking\aecom\ds20_na_2019\eric.waller@aecom.com\d0123067\Maurepas_CC-3.01 to CC-3.08.dwg, Sep 14, 2020 - 11:02:56AM, eric.waller

C:\pwworking\aecom\ds20_na_2019\eric.waller@aecom.com\d0123067\Maurepas_CC-3.01 to CC-3.08.dwg, Sep 14, 2020 - 11:19:01AM, eric.waller



UTILITY NOTES:

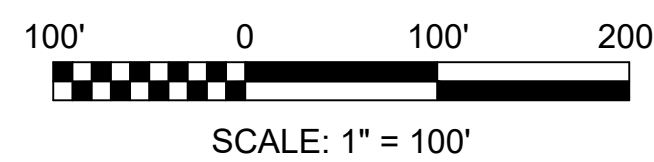
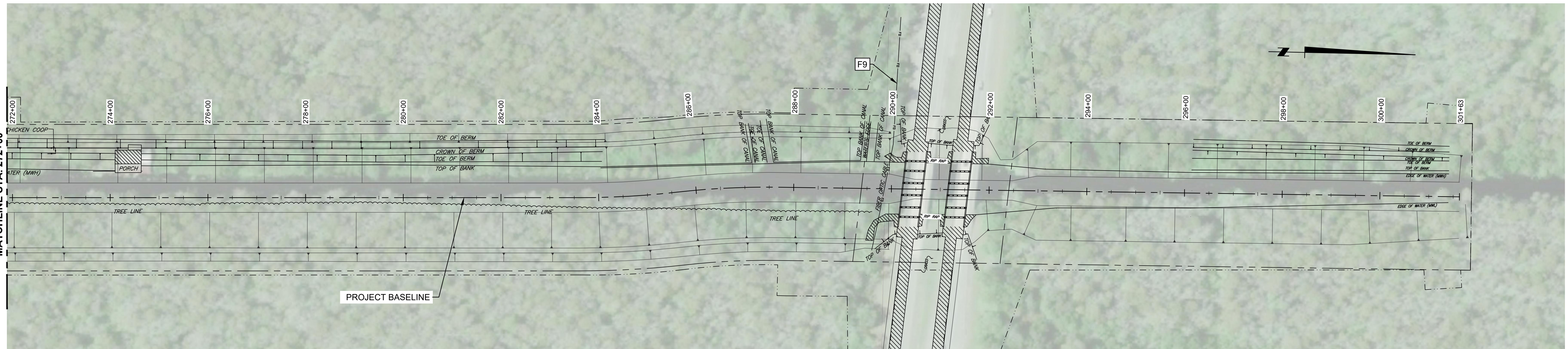
1. ALL UTILITIES SHOWN ARE APPROXIMATE. CONTRACTOR SHALL FIELD LOCATED ALL UTILITY FOR VERIFICATION.

UTILITY DISPOSITION LEGEND:

- 1 DO NOT DISTURB
- 2 DO NOT DISTURB-ACCESS ONLY
- 3 TO BE RELOCATED BY OWNER PRIOR TO CONSTRUCTION
- 4 TO BE RELOCATED BY OWNER CONCURRENT WITH CONSTRUCTION
- 5 TO BE RELOCATED BY CONTRACTOR DURING CONSTRUCTION

UTILITY DISPOSITION TABLE:

ID NO.	OWNER	DESCRIPTION	DISPOSITION
F9	AT&T	UNDERGROUND FIBER OPTIC CABLE	1



PRELIMINARY - NOT FOR RECORDATION, CONVEYANCES OR SALES
PRELIMINARY - NOT FOR CONSTRUCTION

PHILLIP OLIVIER
ENGINEER OF RECORD
LA STATE LICENSE NO. 36348
CIVIL DISCIPLINE
SEPTEMBER 2020
DATE

REV.	DATE	DESCRIPTION	BY



1515 POYDRAS ST
SUITE 2700
NEW ORLEANS, LA 70112



LOUISIANA COASTAL PROTECTION AND RESTORATION AUTHORITY
COASTAL ENGINEERING DIVISION
150 TERRACE AVENUE
BATON ROUGE, LOUISIANA 70802

DRAWN BY:

DESIGNED BY:

RIVER REINTRODUCTION INTO MAUREPAS SWAMP AND WEST SHORE LAKE PONTCHATRAIN FLOOD RISK REINTRODUCTION

CPRA PROJECT NUMBER: PO-0029

AECOM PROJECT NUMBER: 60632162

APPROVED BY:

UTILITY PLANS
STA 250+00 TO STA 301+66

DATE: SEPTEMBER 2020

SHEET CC-3.08

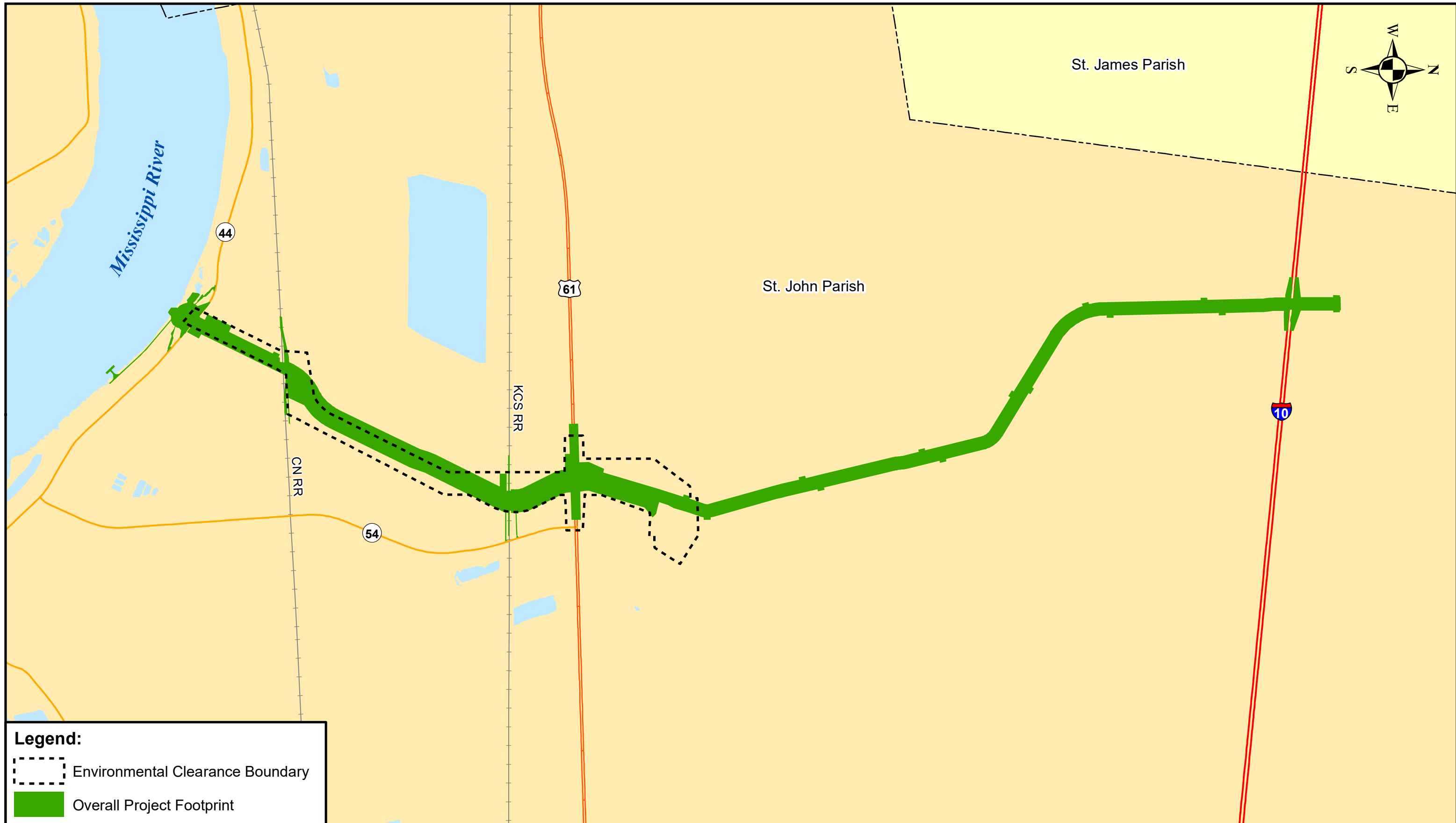
STATE OF LOUISIANA
COASTAL PROTECTION AND RESTORATION AUTHORITY

RIVER REINTRODUCTION INTO MAUREPAS SWAMP
AND WEST SHORE LAKE PONTCHARTRAIN FLOOD RISK
REDUCTION PROJECT PO-0029
STATE PROJECT No. PO-0062
LaGOV NO. 4400019214

BASIS OF DESIGN REPORT
15% DESIGN

APPENDIX H

SHAPEFILES SUPPLIED FOR WVA



Legend:

- Environmental Clearance Boundary
- Overall Project Footprint

0 1,000 2,000 Feet

PRELIMINARY - NOT FOR RECORDATION, CONVEYANCES OR SALES
 PRELIMINARY - NOT FOR CONSTRUCTION

PHILLIP OLIVIER
 ENGINEER OF RECORD

CIVIL
 DISCIPLINE

LA 36348 NOVEMBER 2020
 STATE LICENSE NO. DATE

REV.	DATE	DESCRIPTION	BY

AECOM

1555 POYDRAS ST
 SUITE 1200
 NEW ORLEANS, LA 70112

LOUISIANA COASTAL PROTECTION AND RESTORATION AUTHORITY
 COASTAL ENGINEERING DIVISION

150 TERRACE AVENUE
 BATON ROUGE, LOUISIANA 70802

DRAWN BY: DESIGNED BY:

RIVER REINTRODUCTION INTO MAUREPAS SWAMP AND WEST SHORE LAKE PONTCHATRAIN FLOOD RISK REDUCTION PROJECT

CPRA PROJECT NUMBER: PO-0029

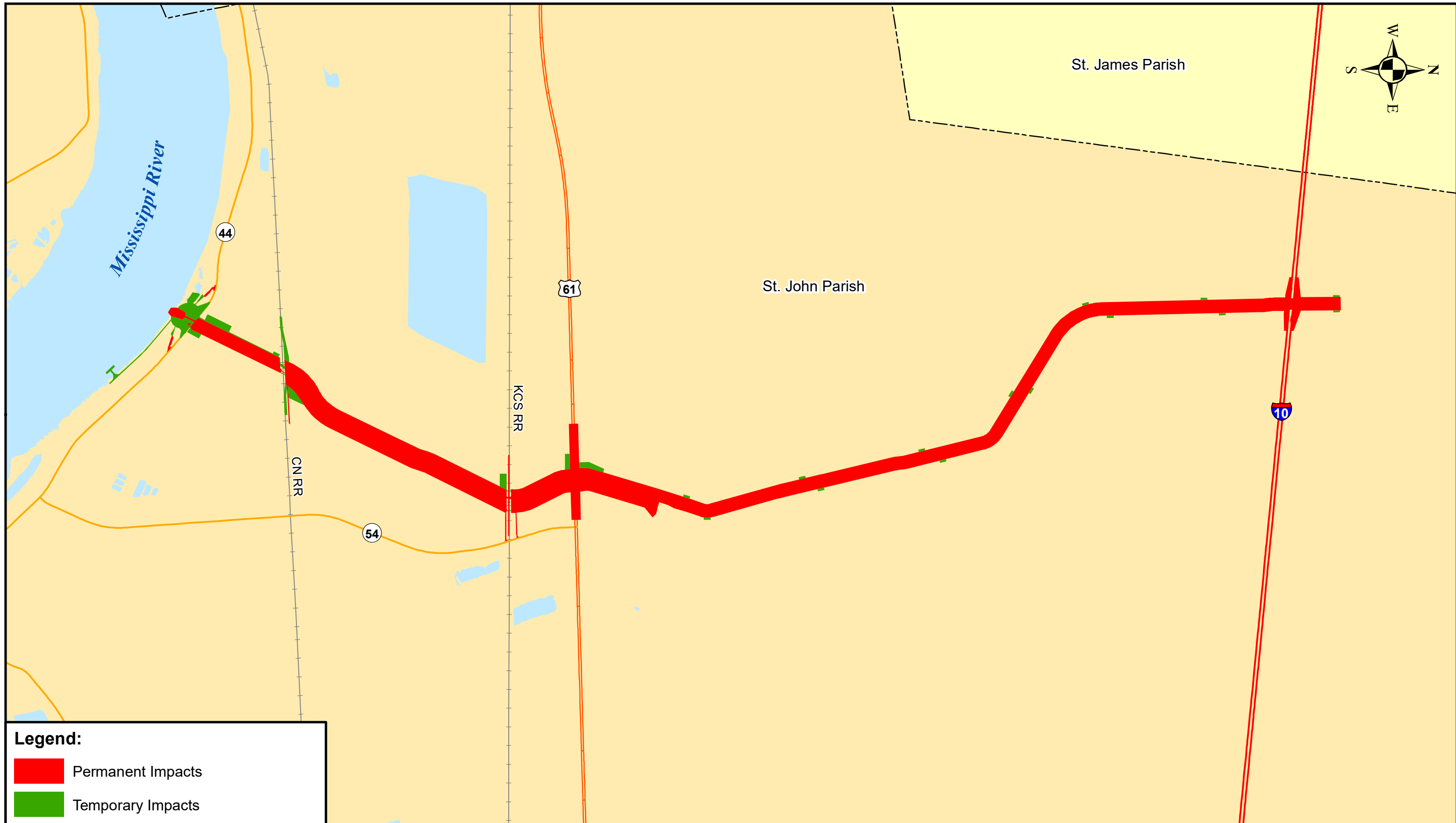
AECOM PROJECT NUMBER: 60632162

APPROVED BY:

MAUREPAS/WSLP PROJECT FOOTPRINT & ENV. CLEARANCE BOUNDARY

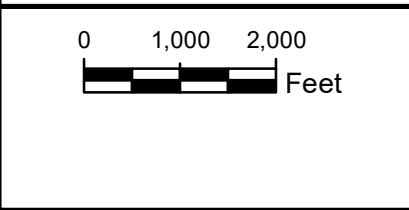
DATE: DECEMBER 2020

APPENDIX E1



Legend:

- Permanent Impacts
- Temporary Impacts



PRELIMINARY - NOT FOR RECORDATION, CONVEYANCES OR SALES
 PRELIMINARY - NOT FOR CONSTRUCTION

PHILLIP OLIVIER
 ENGINEER OF RECORD

CIVIL
 DISCIPLINE

LA 36348 NOVEMBER 2020
 STATE LICENSE NO. DATE

REV.	DATE	DESCRIPTION	BY

AECOM

1555 POYDRAS ST
 SUITE 1200
 NEW ORLEANS, LA 70112

LOUISIANA COASTAL PROTECTION AND RESTORATION AUTHORITY
 COASTAL ENGINEERING DIVISION

150 TERRACE AVENUE
 BATON ROUGE, LOUISIANA 70802

DRAWN BY: DESIGNED BY:

RIVER REINTRODUCTION INTO MAUREPAS SWAMP AND WEST SHORE LAKE PONTCHATRAIN FLOOD RISK REDUCTION PROJECT

CPRA PROJECT NUMBER: PO-0029

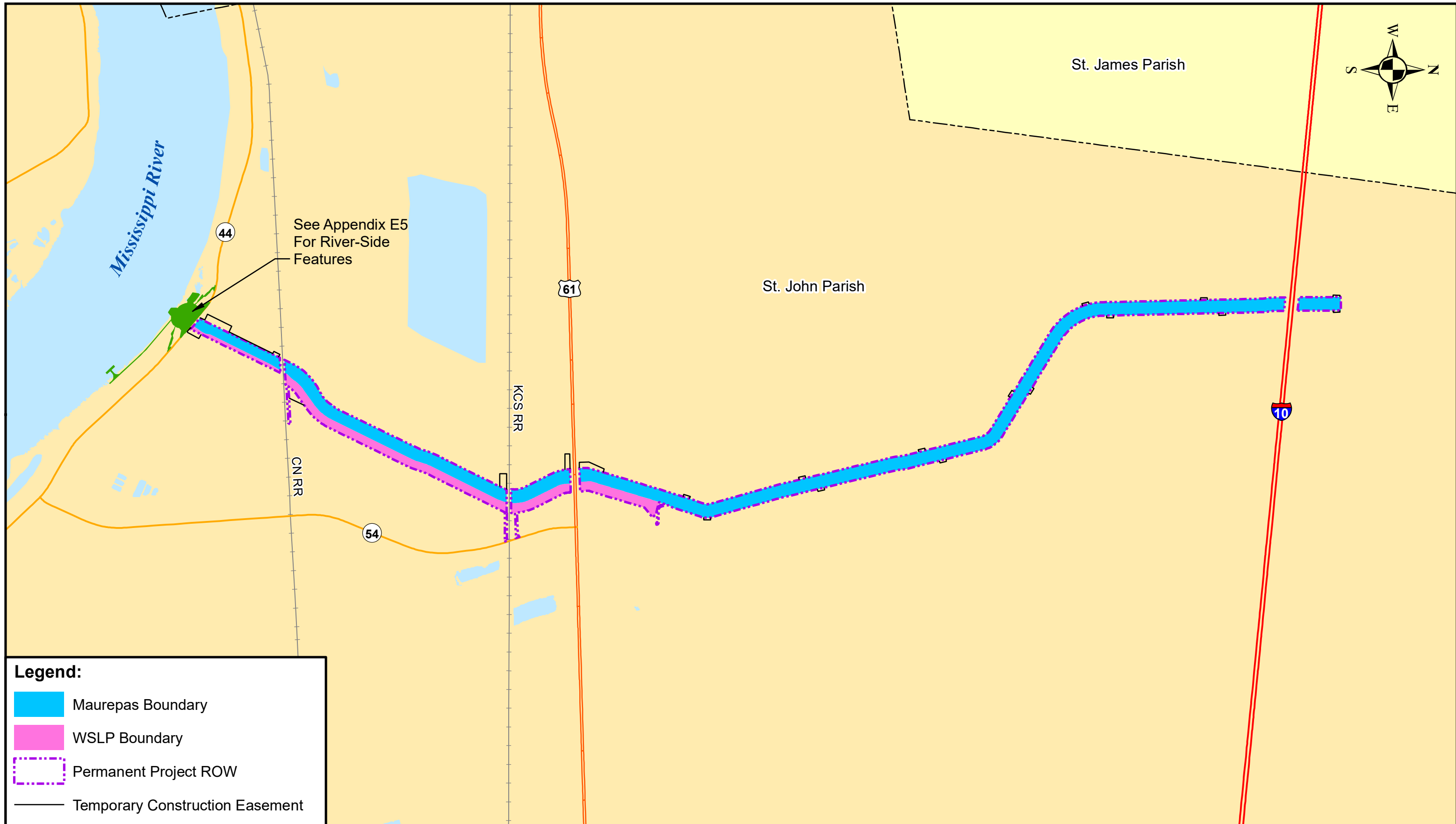
AECOM PROJECT NUMBER: 60632162

APPROVED BY:

MAUREPAS/WSLP PERMANENT AND TEMPORARY IMPACTS

DATE: DECEMBER 2020

APPENDIX E2



See Appendix E5
For River-Side
Features

Legend:

- Maurepas Boundary
- WSLP Boundary
- Permanent Project ROW
- Temporary Construction Easement

0 1,000 2,000
Feet

PRELIMINARY - NOT FOR RECORDATION, CONVEYANCES OR SALES
PRELIMINARY - NOT FOR CONSTRUCTION

PHILLIP OLIVIER
ENGINEER OF RECORD

CIVIL
DISCIPLINE

LA 36348 NOVEMBER 2020
STATE LICENSE NO. DATE

REV.	DATE	DESCRIPTION	BY

AECOM

1555 POYDRAS ST
SUITE 1200
NEW ORLEANS, LA 70112

LOUISIANA COASTAL PROTECTION AND RESTORATION AUTHORITY
COASTAL ENGINEERING DIVISION

150 TERRACE AVENUE
BATON ROUGE, LOUISIANA 70802

DRAWN BY: DESIGNED BY:

RIVER REINTRODUCTION INTO MAUREPAS SWAMP AND WEST SHORE LAKE PONTCHATRAIN FLOOD RISK REDUCTION PROJECT

CPRA PROJECT NUMBER: PO-0029

AECOM PROJECT NUMBER: 60632162

APPROVED BY:

MAUREPAS/WSLP PROJECT BOUNDARIES, ROW & EASEMENTS

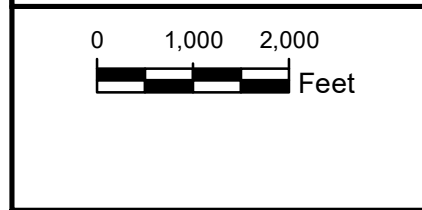
DATE: DECEMBER 2020

APPENDIX E3



Legend:

- Permanent Access Roads
- Temporary Access Roads
- Staging Areas
- Potential Borrow Areas



PRELIMINARY - NOT FOR RECORDATION, CONVEYANCES OR SALES
 PRELIMINARY - NOT FOR CONSTRUCTION

PHILLIP OLIVIER
 ENGINEER OF RECORD

CIVIL
 DISCIPLINE

LA 36348 NOVEMBER 2020
 STATE LICENSE NO. DATE

REV.	DATE	DESCRIPTION	BY

AECOM

1555 POYDRAS ST
 SUITE 1200
 NEW ORLEANS, LA 70112

LOUISIANA COASTAL PROTECTION AND RESTORATION AUTHORITY
 COASTAL ENGINEERING DIVISION

150 TERRACE AVENUE
 BATON ROUGE, LOUISIANA 70802

DRAWN BY: _____ DESIGNED BY: _____

RIVER REINTRODUCTION INTO MAUREPAS SWAMP AND WEST SHORE LAKE PONTCHATRAIN FLOOD RISK REDUCTION PROJECT

CPRA PROJECT NUMBER: PO-0029

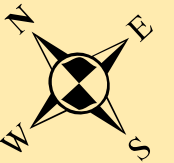
AECOM PROJECT NUMBER: 60632162

APPROVED BY: _____

MAUREPAS/WSLP PROJECT PERMANENT & TEMPORARY ACCESS RDS, STAGING AREAS, AND POTENTIAL BORROW AREAS

DATE: DECEMBER 2020

APPENDIX E4



St. John Parish

Maurepas/WSLP
Project ROW

Outfall U-Frames

Culverts Under
River Road

Levee Tie-In

44

Mississippi River Levee

Permanent Access Road

Temporary Access Road

Dock Access Road

Headworks Structure

Intake U-Frames

Intake Channel Perimeter

Intake Channel Bottom

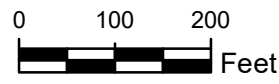
Mississippi River

Dock

Temporary
Access Road
Permanent
Access Road

Legend:

- River Road Detour
- Headworks/Intake Structures
- Cofferdam
- Pond



PRELIMINARY - NOT FOR
RECORDATION,
CONVEYANCES OR SALES
PRELIMINARY - NOT FOR
CONSTRUCTION

PHILLIP OLIVIER CIVIL
ENGINEER OF RECORD DISCIPLINE

LA 36348 NOVEMBER 2020
STATE LICENSE NO. DATE

REV.	DATE	DESCRIPTION	BY



1555 POYDRAS ST
SUITE 1200
NEW ORLEANS, LA 70112



LOUISIANA COASTAL PROTECTION AND RESTORATION
AUTHORITY
COASTAL ENGINEERING DIVISION
150 TERRACE AVENUE
BATON ROUGE, LOUISIANA 70802

DRAWN BY:

DESIGNED BY:

RIVER REINTRODUCTION INTO MAUREPAS
SWAMP AND WEST SHORE LAKE PONTCHATRAIN
FLOOD RISK REDUCTION PROJECT

CPRA PROJECT NUMBER: PO-0029

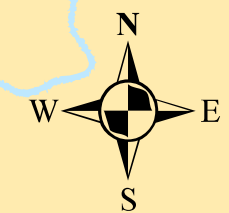
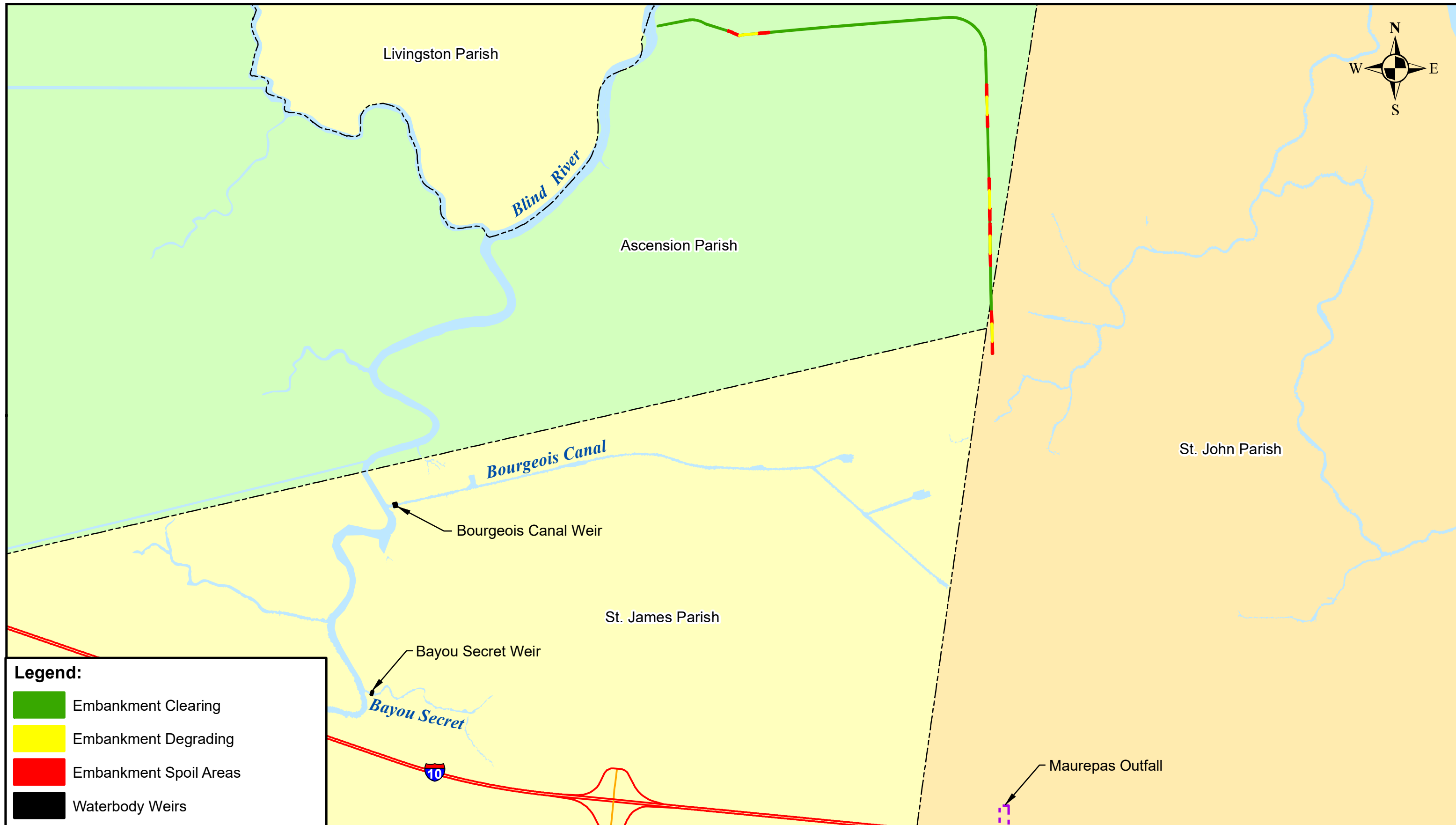
AECOM PROJECT NUMBER: 60632162

APPROVED BY:

MAUREPAS/WSLP PROJECT
RIVER-SIDE FEATURES

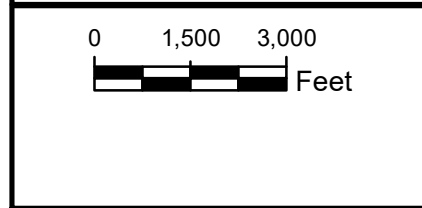
DATE: DECEMBER 2020

APPENDIX E5



Legend:

- Embankment Clearing
- Embankment Degrading
- Embankment Spoil Areas
- Waterbody Weirs



PRELIMINARY - NOT FOR RECORDATION, CONVEYANCES OR SALES
PRELIMINARY - NOT FOR CONSTRUCTION

PHILLIP OLIVIER ENGINEER OF RECORD LA 36348 STATE LICENSE NO.	CIVIL DISCIPLINE NOVEMBER 2020 DATE	REV.	DATE	DESCRIPTION	BY

AECOM

1555 POYDRAS ST
SUITE 1200
NEW ORLEANS, LA 70112

LOUISIANA COASTAL PROTECTION AND RESTORATION AUTHORITY
COASTAL ENGINEERING DIVISION
150 TERRACE AVENUE
BATON ROUGE, LOUISIANA 70802

DRAWN BY: _____ DESIGNED BY: _____

RIVER REINTRODUCTION INTO MAUREPAS SWAMP AND WEST SHORE LAKE PONTCHATRAIN FLOOD RISK REDUCTION PROJECT

CPRA PROJECT NUMBER: PO-0029

AECOM PROJECT NUMBER: 60632162

APPROVED BY: _____

MAUREPAS/WSLP PROJECT EMBANKMENT CUTS AND WEIRS

DATE: DECEMBER 2020

APPENDIX E6